

MARKET HISTORY

Includes data through 7/2010

Delaware County, PA Single-Family



Market History Report

The Market History Report details current and historical statistical information for single-family listings recorded within TREND. This statistical report is organized by county and contains valuable month-over-month, year-over-year statistical information for each of the last 10 years. The Market History Report details activity in a particular market over a 10-year period – from where it's been to where it's at now. The easy-to-read month-over-month, year-over-year chart and graph enables you to clearly identify the year-over-year changes while accounting for seasonal and market trends.

Utilizing the report allows you to gain a better understanding of your market. This will give you new insights and increase your company's value when working with consumers. This powerful report is provided exclusively to TREND members.

Contents

Total Inventory	3
Inventory Accumulation	4
Pending Units	5
Settled Units	6
Total Settled Volume	7
Median Settled Price.....	8
Average Settled Price	9
Average Settled Price / Original Price.....	10

Definitions

Total Inventory The number of active single-family listings on the market on the last day of the specified month.

Inventory Accumulation The number of months it would take to exhaust the current supply of single-family listings at the current absorption rate.

Absorption Rate The average number of single-family listings sold in the market per month over the previous 12 months.

Pending Units The number of single-family listings with Pending dates during the specified month.

Settled Units The number of single-family listings with Settled dates during the specified month.

Total Settled Volume The total dollar volume of single-family listings that have settled during the specified month.

Median Settled Price The median price that single-family listings settled for during the specified month. Determined by arranging all Settled Listings in numerical order by price and then selecting the middle value.

Average Settled Price The average price that single-family listings settled for during the specified month. Determined by dividing the Total Settled Volume by the number of Settled Listings.

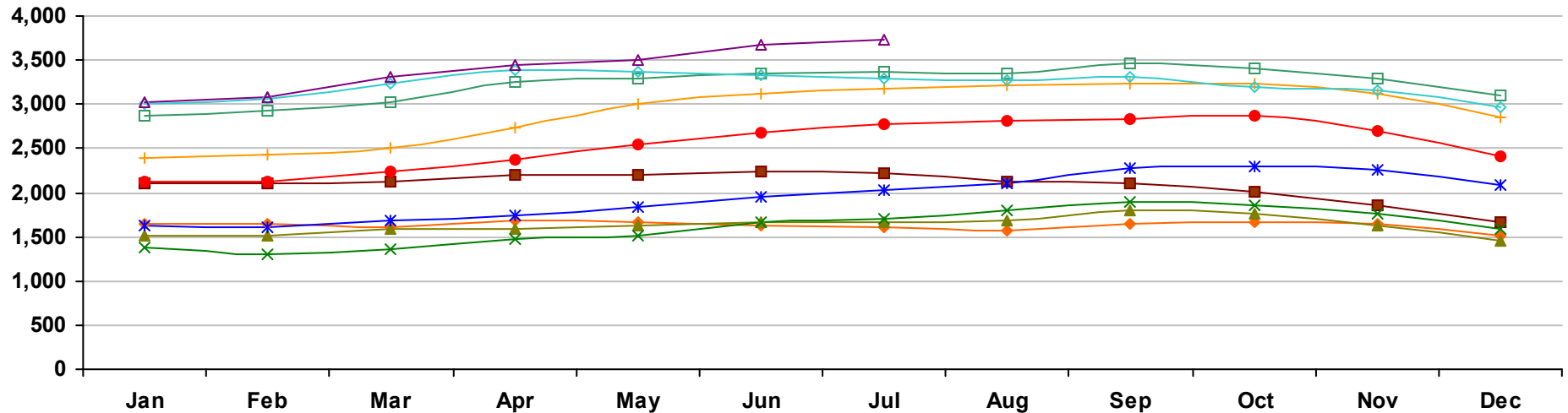
Average Settled Price / Original Price The average percentage of the Original Price that single-family listings settled for during the specified month. This number is determined by dividing the Settled Price by the Original Price for every listing, summing them and then dividing by the number of settled listings. TREND excludes listings if the Settled Price is greater than 150 percent or less than 50 percent of the Original Price. This ensures the percentage is more representative of listings in the market area.

Percent Change The change in value as compared to the same month of the previous year. Indicated by +/-0.0%.

Notes on Statistics

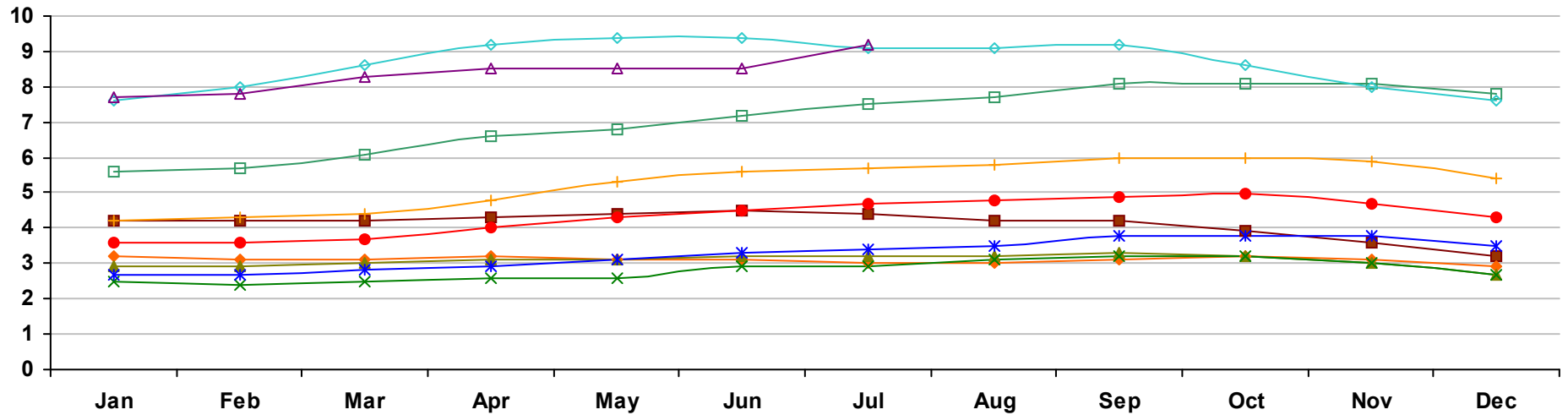
- All statistics are from TREND's monthly Residential Activity Reports. Due to the fluid nature of MLS data, insignificant statistical variations may occur with regard to sales activity between the various TREND reports.
- Mobile homes and condominiums are excluded from these statistics.
- This report includes information on listings and transactions facilitated through TREND and does not reflect the total number of listings and transactions of a given market area.
- All monetary statistics are rounded to the nearest \$10.

Delaware County, PA - Single-Family - Total Inventory



	Jan	Feb	Mar	Apr	May	Jun	Jul	Aug	Sep	Oct	Nov	Dec
2001	2,108 -23.4%	2,103 -25.2%	2,132 -24.2%	2,194 -21.3%	2,208 -20.1%	2,245 -16.9%	2,219 -16.3%	2,129 -15.7%	2,111 -14.1%	2,009 -16.7%	1,864 -19.1%	1,672 -19.5%
2002	1,647 -21.9%	1,647 -21.7%	1,607 -24.6%	1,683 -23.3%	1,657 -25.0%	1,621 -27.8%	1,600 -27.9%	1,574 -26.1%	1,648 -21.9%	1,672 -16.8%	1,637 -12.2%	1,514 -9.4%
2003	1,520 -7.7%	1,511 -8.3%	1,592 -0.9%	1,592 -5.4%	1,632 -1.5%	1,659 2.3%	1,664 4.0%	1,684 7.0%	1,796 9.0%	1,755 5.0%	1,633 -0.2%	1,464 -3.3%
2004	1,381 -9.1%	1,304 -13.7%	1,361 -14.5%	1,475 -7.3%	1,505 -7.8%	1,665 0.4%	1,706 2.5%	1,801 6.9%	1,891 5.3%	1,853 5.6%	1,759 7.7%	1,592 8.7%
2005	1,631 18.1%	1,613 23.7%	1,684 23.7%	1,747 18.4%	1,836 22.0%	1,957 17.5%	2,028 18.9%	2,100 16.6%	2,274 20.3%	2,295 23.9%	2,258 28.4%	2,088 31.2%
2006	2,129 30.5%	2,128 31.9%	2,243 33.2%	2,369 35.6%	2,539 38.3%	2,674 36.6%	2,766 36.4%	2,821 34.3%	2,836 24.7%	2,875 25.3%	2,696 19.4%	2,420 15.9%
2007	2,400 12.7%	2,425 14.0%	2,515 12.1%	2,732 15.3%	2,998 18.1%	3,121 16.7%	3,169 14.6%	3,210 13.8%	3,244 14.4%	3,243 12.8%	3,123 15.8%	2,846 17.6%
2008	2,871 19.6%	2,922 20.5%	3,033 20.6%	3,248 18.9%	3,292 9.8%	3,340 7.0%	3,360 6.0%	3,342 4.1%	3,458 6.6%	3,404 5.0%	3,284 5.2%	3,102 9.0%
2009	3,001 4.5%	3,063 4.8%	3,227 6.4%	3,395 4.5%	3,373 2.5%	3,338 -0.1%	3,289 -2.1%	3,269 -2.2%	3,312 -4.2%	3,198 -6.1%	3,162 -3.7%	2,966 -4.4%
2010	3,028 0.9%	3,082 0.6%	3,310 2.6%	3,442 1.4%	3,505 3.9%	3,666 9.8%	3,737 13.6%					

Delaware County, PA - Single-Family - Inventory Accumulation

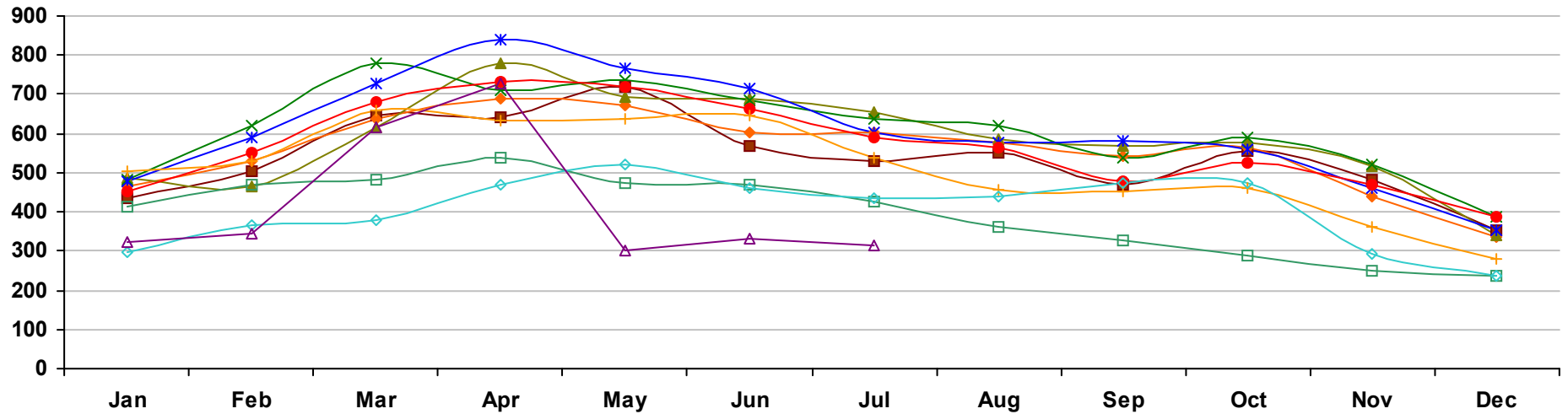


	Jan	Feb	Mar	Apr	May	Jun	Jul	Aug	Sep	Oct	Nov	Dec
2001	4.2 -25.0%	4.2 -26.3%	4.2 -26.3%	4.3 -24.6%	4.4 -21.4%	4.5 -16.7%	4.4 -17.0%	4.2 -16.0%	4.2 -14.3%	3.9 -17.0%	3.6 -20.0%	3.2 -22.0%
2002	3.2 -23.8%	3.1 -26.2%	3.1 -26.2%	3.2 -25.6%	3.1 -29.5%	3.1 -31.1%	3.0 -31.8%	3.0 -28.6%	3.1 -26.2%	3.2 -17.9%	3.1 -13.9%	2.9 -9.4%
2003	2.9 -9.4%	2.9 -6.5%	3.0 -3.2%	3.1 -3.1%	3.1 0.0%	3.2 3.2%	3.2 6.7%	3.2 6.7%	3.3 6.5%	3.2 0.0%	3.0 -3.2%	2.7 -6.9%
2004	2.5 -13.8%	2.4 -17.2%	2.5 -16.7%	2.6 -16.1%	2.6 -16.1%	2.9 -9.4%	2.9 -9.4%	3.1 -3.1%	3.2 -3.0%	3.2 0.0%	3.0 0.0%	2.7 0.0%
2005	2.7 8.0%	2.7 12.5%	2.8 12.0%	2.9 11.5%	3.1 19.2%	3.3 13.8%	3.4 17.2%	3.5 12.9%	3.8 18.7%	3.8 18.7%	3.8 26.7%	3.5 29.6%
2006	3.6 33.3%	3.6 33.3%	3.7 32.1%	4.0 37.9%	4.3 38.7%	4.5 36.4%	4.7 38.2%	4.8 37.1%	4.9 28.9%	5.0 31.6%	4.7 23.7%	4.3 22.9%
2007	4.2 16.7%	4.3 19.4%	4.4 18.9%	4.8 20.0%	5.3 23.3%	5.6 24.4%	5.7 21.3%	5.8 20.8%	6.0 22.4%	6.0 20.0%	5.9 25.5%	5.4 25.6%
2008	5.6 33.3%	5.7 32.6%	6.1 38.6%	6.6 37.5%	6.8 28.3%	7.2 28.6%	7.5 31.6%	7.7 32.8%	8.1 35.0%	8.1 35.0%	8.1 37.3%	7.8 44.4%
2009	7.6 35.7%	8.0 40.4%	8.6 41.0%	9.2 39.4%	9.4 38.2%	9.4 30.6%	9.1 21.3%	9.1 18.2%	9.2 13.6%	8.6 6.2%	8.0 -1.2%	7.6 -2.6%
2010	7.7 1.3%	7.8 -2.5%	8.3 -3.5%	8.5 -7.6%	8.5 -9.6%	8.5 -9.6%	9.2 1.1%					

Market History Report © Copyright 2010 TREND. Compiled on 8/10/2010. Information deemed reliable, but not guaranteed. Contact TREND for reprint permission.

TREND • 660 American Avenue, Suite 203 • King of Prussia, PA 19406 • 1-877-330-9900 • www.trendmls.com

Delaware County, PA - Single-Family - Pending Units

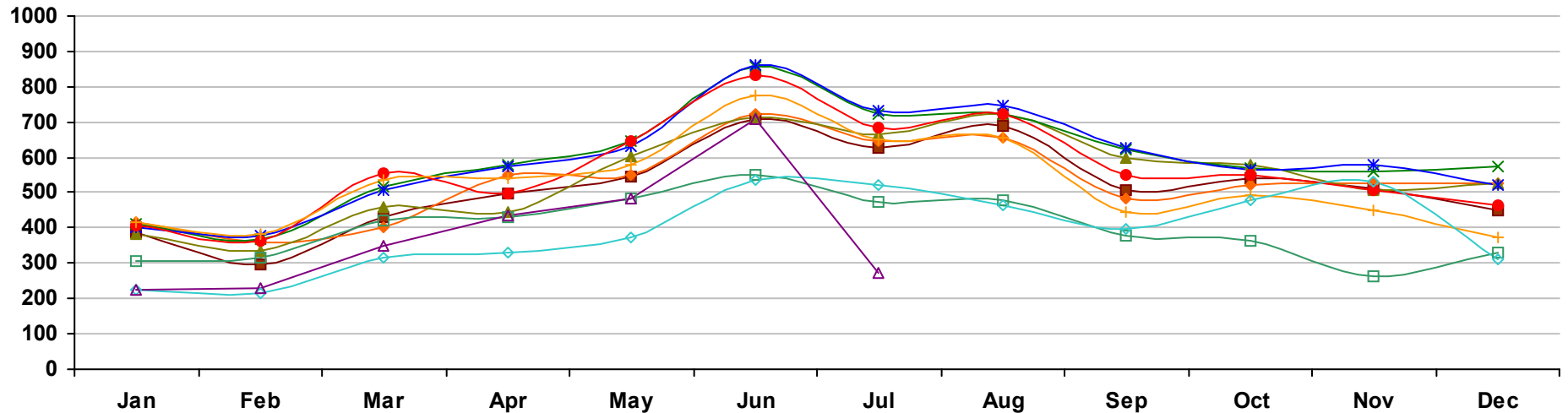


	Jan	Feb	Mar	Apr	May	Jun	Jul	Aug	Sep	Oct	Nov	Dec
2001	437 7.4%	503 1.8%	646 -8.0%	641 -2.7%	721 12.0%	567 -8.1%	530 2.3%	553 7.6%	470 3.5%	557 8.8%	483 15.8%	353 6.3%
2002	466 6.6%	528 5.0%	639 -1.1%	687 7.2%	672 -6.8%	603 6.3%	605 14.2%	578 4.5%	542 15.3%	566 1.6%	440 -8.9%	335 -5.1%
2003	485 4.1%	465 -11.9%	617 -3.4%	778 13.2%	694 3.3%	688 14.1%	653 7.9%	587 1.6%	568 4.8%	577 1.9%	517 17.5%	340 1.5%
2004	484 -0.2%	621 33.5%	780 26.4%	711 -8.6%	736 6.1%	683 -0.7%	639 -2.1%	620 5.6%	538 -5.3%	590 2.3%	519 0.4%	388 14.1%
2005	479 -1.0%	591 -4.8%	726 -6.9%	841 18.3%	765 3.9%	715 4.7%	602 -5.8%	579 -6.6%	582 8.2%	558 -5.4%	460 -11.4%	351 -9.5%
2006	453 -5.4%	553 -6.4%	680 -6.3%	733 -12.8%	721 -5.8%	665 -7.0%	591 -1.8%	564 -2.6%	476 -18.2%	524 -6.1%	468 1.7%	386 10.0%
2007	503 11.0%	529 -4.3%	659 -3.1%	632 -13.8%	639 -11.4%	646 -2.9%	539 -8.8%	455 -19.3%	452 -5.0%	462 -11.8%	362 -22.6%	280 -27.5%
2008	413 -17.9%	468 -11.5%	481 -27.0%	537 -15.0%	473 -26.0%	469 -27.4%	425 -21.2%	361 -20.7%	326 -27.9%	287 -37.9%	248 -31.5%	238 -15.0%
2009	297 -28.1%	368 -21.4%	381 -20.8%	469 -12.7%	523 10.6%	459 -2.1%	436 2.6%	440 21.9%	472 44.8%	472 64.5%	294 18.5%	235 -1.3%
2010	323 8.8%	343 -6.8%	614 61.2%	729 55.4%	301 -42.4%	331 -27.9%	316 -27.5%					

Market History Report © Copyright 2010 TREND. Compiled on 8/10/2010. Information deemed reliable, but not guaranteed. Contact TREND for reprint permission.

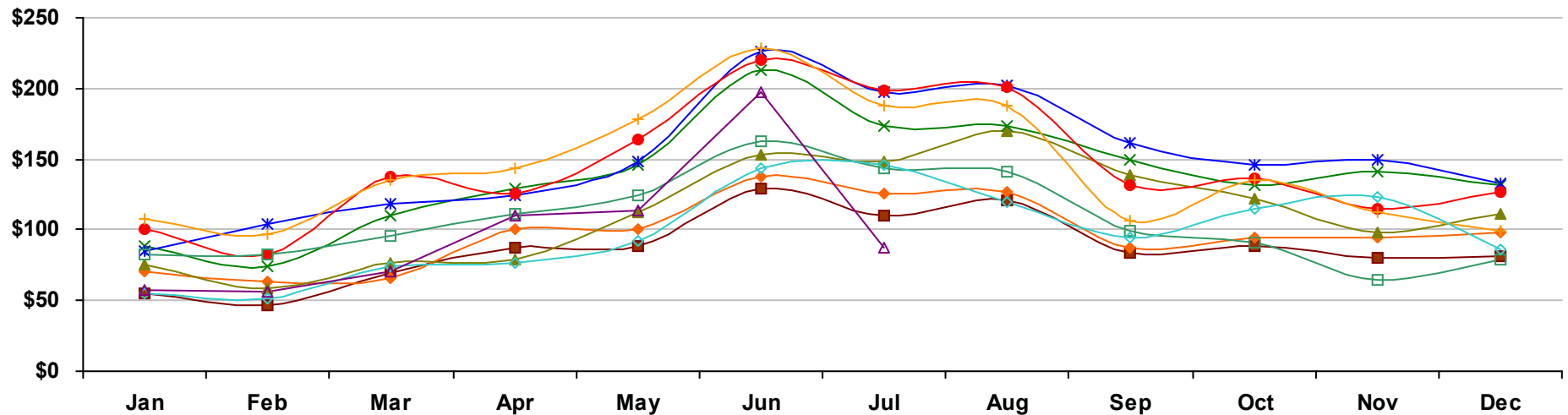
TREND • 660 American Avenue, Suite 203 • King of Prussia, PA 19406 • 1-877-330-9900 • www.trendmls.com

Delaware County, PA - Single-Family - Settled Units



	Jan	Feb	Mar	Apr	May	Jun	Jul	Aug	Sep	Oct	Nov	Dec
2001	387 -1.3%	299 -4.5%	429 3.6%	496 2.7%	546 -2.2%	708 -8.9%	629 1.8%	688 3.3%	509 9.0%	540 9.5%	514 9.1%	451 2.3%
2002	418 8.0%	357 19.4%	402 -6.3%	549 10.7%	548 0.4%	722 2.0%	647 2.9%	654 -4.9%	482 -5.3%	521 -3.5%	528 2.7%	528 17.1%
2003	384 -8.1%	333 -6.7%	458 13.9%	443 -19.3%	603 10.0%	712 -1.4%	663 2.5%	722 10.4%	596 23.7%	579 11.1%	508 -3.8%	527 -0.2%
2004	410 6.8%	367 10.2%	516 12.7%	580 30.9%	645 7.0%	857 20.4%	724 9.2%	721 -0.1%	624 4.7%	571 -1.4%	559 10.0%	575 9.1%
2005	403 -1.7%	377 2.7%	507 -1.7%	576 -0.7%	633 -1.9%	862 0.6%	734 1.4%	748 3.7%	625 0.2%	564 -1.2%	577 3.2%	523 -9.0%
2006	405 0.5%	363 -3.7%	556 9.7%	499 -13.4%	648 2.4%	831 -3.6%	682 -7.1%	722 -3.5%	548 -12.3%	551 -2.3%	509 -11.8%	465 -11.1%
2007	415 2.5%	381 5.0%	535 -3.8%	541 8.4%	580 -10.5%	773 -7.0%	649 -4.8%	655 -9.3%	443 -19.2%	491 -10.9%	448 -12.0%	374 -19.6%
2008	306 -26.3%	318 -16.5%	420 -21.5%	431 -20.3%	485 -16.4%	550 -28.8%	472 -27.3%	477 -27.2%	378 -14.7%	362 -26.3%	262 -41.5%	329 -12.0%
2009	224 -26.8%	217 -31.8%	315 -25.0%	330 -23.4%	372 -23.3%	537 -2.4%	521 10.4%	464 -2.7%	397 5.0%	480 32.6%	530 102.3%	311 -5.5%
2010	224 0.0%	229 5.5%	351 11.4%	436 32.1%	481 29.3%	707 31.7%	273 -47.6%					

Delaware County, PA - Single-Family - Total Settled Volume



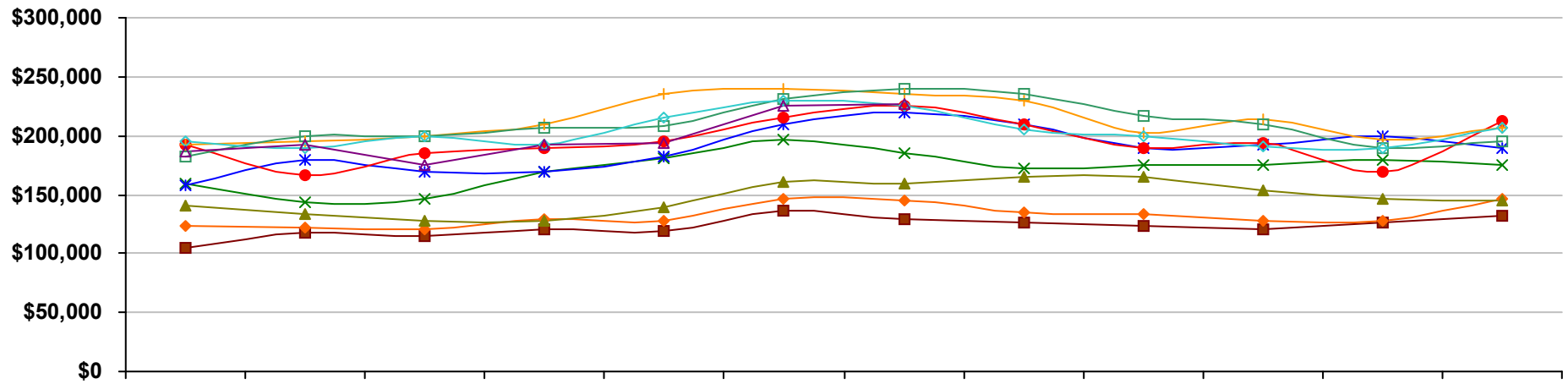
	Jan	Feb	Mar	Apr	May	Jun	Jul	Aug	Sep	Oct	Nov	Dec
2001	\$55 -10.0%	\$47 4.8%	\$69 16.1%	\$87 19.5%	\$89 2.2%	\$129 -4.0%	\$110 -1.4%	\$121 9.5%	\$84 24.0%	\$88 4.7%	\$80 9.4%	\$81 15.2%
2002	\$71 29.0%	\$63 34.2%	\$66 -4.4%	\$101 17.1%	\$101 14.2%	\$138 6.6%	\$126 14.3%	\$127 4.8%	\$87 3.1%	\$95 7.0%	\$94 18.1%	\$98 20.7%
2003	\$75 6.7%	\$59 -6.5%	\$76 14.7%	\$79 -21.7%	\$112 10.9%	\$153 10.8%	\$148 17.7%	\$170 33.7%	\$139 59.9%	\$122 28.8%	\$98 3.6%	\$111 13.4%
2004	\$89 18.6%	\$74 25.4%	\$110 45.2%	\$129 62.7%	\$146 30.5%	\$213 39.6%	\$173 16.6%	\$173 1.5%	\$149 6.9%	\$132 8.3%	\$141 44.2%	\$132 18.7%
2005	\$85 -4.5%	\$104 40.4%	\$118 6.8%	\$125 -3.5%	\$148 1.2%	\$226 6.2%	\$197 14.1%	\$202 17.2%	\$162 9.1%	\$146 10.2%	\$149 6.0%	\$133 0.8%
2006	\$101 18.4%	\$82 -21.4%	\$137 16.6%	\$126 1.0%	\$164 11.1%	\$220 -2.7%	\$198 0.7%	\$201 -0.7%	\$132 -18.6%	\$136 -6.5%	\$115 -22.9%	\$127 -4.1%
2007	\$108 7.5%	\$97 18.2%	\$135 -1.8%	\$143 13.3%	\$178 8.4%	\$229 3.9%	\$188 -5.2%	\$188 -6.3%	\$107 -18.7%	\$135 -0.9%	\$112 -2.8%	\$99 -22.1%
2008	\$83 -22.9%	\$83 -14.4%	\$96 -28.4%	\$111 -22.3%	\$124 -30.3%	\$163 -28.4%	\$143 -23.8%	\$141 -25.1%	\$99 -7.5%	\$91 -32.7%	\$65 -41.6%	\$79 -20.7%
2009	\$55 -34.0%	\$52 -37.1%	\$74 -23.1%	\$76 -31.6%	\$92 -26.1%	\$144 -11.8%	\$146 2.1%	\$120 -14.7%	\$94 -5.6%	\$115 26.9%	\$123 88.9%	\$86 8.9%
2010	\$57 4.1%	\$56 7.9%	\$71 -4.0%	\$110 45.2%	\$114 23.8%	\$197 36.8%	\$87 -40.6%					

Values on this report are displayed in Millions

Market History Report © Copyright 2010 TREND. Compiled on 8/10/2010. Information deemed reliable, but not guaranteed. Contact TREND for reprint permission.

TREND • 660 American Avenue, Suite 203 • King of Prussia, PA 19406 • 1-877-330-9900 • www.trendmls.com

Delaware County, PA - Single-Family - Median Settled Price

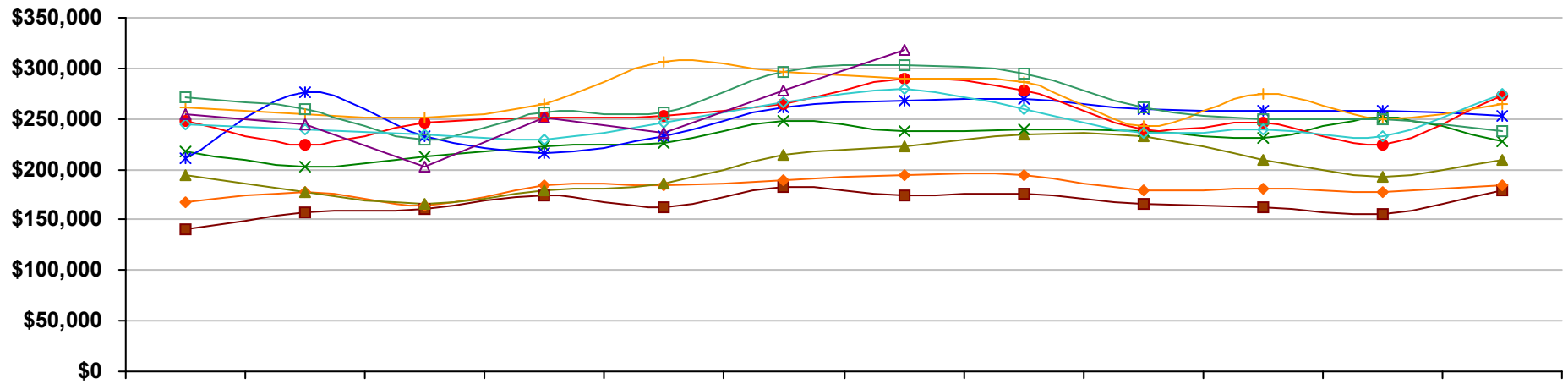


	Jan	Feb	Mar	Apr	May	Jun	Jul	Aug	Sep	Oct	Nov	Dec
2001	\$105,000 -10.3%	\$117,000 5.4%	\$115,000 6.5%	\$120,000 6.2%	\$119,000 0.0%	\$136,000 6.2%	\$129,000 -3.0%	\$127,000 -1.6%	\$124,000 5.1%	\$120,000 -3.2%	\$127,000 6.7%	\$132,000 8.2%
2002	\$124,000 18.1%	\$122,000 4.3%	\$121,000 5.2%	\$129,000 7.5%	\$128,000 7.6%	\$146,000 7.4%	\$145,000 12.4%	\$135,000 6.3%	\$134,000 8.1%	\$128,000 6.7%	\$128,000 0.8%	\$147,000 11.4%
2003	\$141,000 13.7%	\$133,000 9.0%	\$128,000 5.8%	\$128,000 -0.8%	\$139,000 8.6%	\$161,000 10.3%	\$160,000 10.3%	\$165,000 22.2%	\$165,000 23.1%	\$153,000 19.5%	\$146,000 14.1%	\$145,000 -1.4%
2004	\$160,000 13.5%	\$144,000 8.3%	\$146,000 14.1%	\$170,000 32.8%	\$181,000 30.2%	\$196,000 21.7%	\$185,000 15.6%	\$172,000 4.2%	\$175,000 6.1%	\$175,000 14.4%	\$179,000 22.6%	\$175,000 20.7%
2005	\$158,000 -1.2%	\$179,000 24.3%	\$170,000 16.4%	\$170,000 0.0%	\$182,000 0.6%	\$210,000 7.1%	\$220,000 18.9%	\$209,000 21.5%	\$190,000 8.6%	\$192,000 9.7%	\$199,000 11.2%	\$189,000 8.0%
2006	\$192,000 21.5%	\$167,000 -6.7%	\$185,000 8.8%	\$189,000 11.2%	\$195,000 7.1%	\$215,000 2.4%	\$225,000 2.3%	\$210,000 0.5%	\$190,000 0.0%	\$194,000 1.0%	\$170,000 -14.6%	\$212,000 12.2%
2007	\$193,000 0.5%	\$195,000 16.8%	\$199,000 7.6%	\$210,000 11.1%	\$235,000 20.5%	\$239,000 11.2%	\$235,000 4.4%	\$230,000 9.5%	\$203,000 6.8%	\$214,000 10.3%	\$197,000 15.9%	\$207,000 -2.4%
2008	\$183,000 -5.2%	\$199,000 2.1%	\$200,000 0.5%	\$206,000 -1.9%	\$208,000 -11.5%	\$231,000 -3.3%	\$240,000 2.1%	\$235,000 2.2%	\$217,000 6.9%	\$209,000 -2.3%	\$190,000 -3.6%	\$195,000 -5.8%
2009	\$195,000 6.6%	\$189,000 -5.0%	\$200,000 0.0%	\$192,000 -6.8%	\$215,000 3.4%	\$230,000 -0.4%	\$225,000 -6.2%	\$205,000 -12.8%	\$200,000 -7.8%	\$191,000 -8.6%	\$190,000 0.0%	\$207,000 6.2%
2010	\$187,000 -4.1%	\$193,000 2.1%	\$175,000 -12.5%	\$193,000 0.5%	\$194,000 -9.8%	\$225,000 -2.2%	\$227,000 0.9%					

Market History Report © Copyright 2010 TREND. Compiled on 8/10/2010. Information deemed reliable, but not guaranteed. Contact TREND for reprint permission.

TREND • 660 American Avenue, Suite 203 • King of Prussia, PA 19406 • 1-877-330-9900 • www.trendmls.com

Delaware County, PA - Single-Family - Average Settled Price

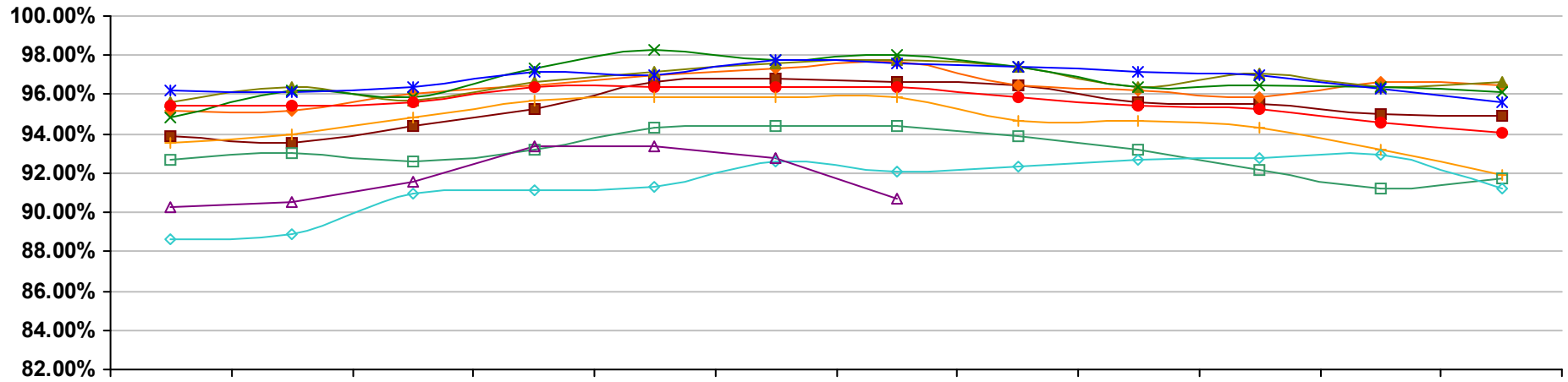


	Jan	Feb	Mar	Apr	May	Jun	Jul	Aug	Sep	Oct	Nov	Dec
2001	\$141,000 -8.4%	\$157,000 9.8%	\$161,000 12.6%	\$174,000 16.0%	\$162,000 4.5%	\$182,000 5.2%	\$174,000 -3.3%	\$176,000 6.0%	\$165,000 13.8%	\$163,000 -4.7%	\$155,000 0.6%	\$179,000 12.6%
2002	\$168,000 19.1%	\$177,000 12.7%	\$164,000 1.9%	\$184,000 5.7%	\$184,000 13.6%	\$190,000 4.4%	\$194,000 11.5%	\$194,000 10.2%	\$180,000 9.1%	\$181,000 11.0%	\$178,000 14.8%	\$185,000 3.4%
2003	\$195,000 16.1%	\$177,000 0.0%	\$165,000 0.6%	\$179,000 -2.7%	\$186,000 1.1%	\$214,000 12.6%	\$223,000 14.9%	\$235,000 21.1%	\$233,000 29.4%	\$210,000 16.0%	\$192,000 7.9%	\$210,000 13.5%
2004	\$217,000 11.3%	\$202,000 14.1%	\$213,000 29.1%	\$222,000 24.0%	\$226,000 21.5%	\$248,000 15.9%	\$238,000 6.7%	\$239,000 1.7%	\$238,000 2.1%	\$231,000 10.0%	\$251,000 30.7%	\$228,000 8.6%
2005	\$211,000 -2.8%	\$276,000 36.6%	\$232,000 8.9%	\$216,000 -2.7%	\$233,000 3.1%	\$262,000 5.6%	\$268,000 12.6%	\$270,000 13.0%	\$259,000 8.8%	\$258,000 11.7%	\$258,000 2.8%	\$253,000 11.0%
2006	\$248,000 17.5%	\$225,000 -18.5%	\$246,000 6.0%	\$252,000 16.7%	\$253,000 8.6%	\$265,000 1.1%	\$290,000 8.2%	\$278,000 3.0%	\$240,000 -7.3%	\$246,000 -4.7%	\$225,000 -12.8%	\$273,000 7.9%
2007	\$261,000 5.2%	\$254,000 12.9%	\$251,000 2.0%	\$264,000 4.8%	\$307,000 21.3%	\$296,000 11.7%	\$289,000 -0.3%	\$287,000 3.2%	\$242,000 0.8%	\$274,000 11.4%	\$249,000 10.7%	\$265,000 -2.9%
2008	\$272,000 4.2%	\$260,000 2.4%	\$229,000 -8.8%	\$257,000 -2.7%	\$256,000 -16.6%	\$296,000 0.0%	\$303,000 4.8%	\$295,000 2.8%	\$262,000 8.3%	\$250,000 -8.8%	\$249,000 0.0%	\$238,000 -10.2%
2009	\$245,000 -9.9%	\$240,000 -7.7%	\$235,000 2.6%	\$230,000 -10.5%	\$246,000 -3.9%	\$267,000 -9.8%	\$280,000 -7.6%	\$259,000 -12.2%	\$236,000 -9.9%	\$239,000 -4.4%	\$232,000 -6.8%	\$275,000 15.5%
2010	\$255,000 4.1%	\$245,000 2.1%	\$202,000 -14.0%	\$252,000 9.6%	\$236,000 -4.1%	\$278,000 4.1%	\$318,000 13.6%					

Market History Report © Copyright 2010 TREND. Compiled on 8/10/2010. Information deemed reliable, but not guaranteed. Contact TREND for reprint permission.

TREND • 660 American Avenue, Suite 203 • King of Prussia, PA 19406 • 1-877-330-9900 • www.trendmls.com

Delaware County, PA - Single-Family - Average Settled Price/Original Price



	Jan	Feb	Mar	Apr	May	Jun	Jul	Aug	Sep	Oct	Nov	Dec
2001	93.9% -0.7%	93.5% -1.2%	94.4% -0.4%	95.3% 1.2%	96.6% 1.8%	96.8% 1.0%	96.6% 0.4%	96.5% 0.8%	95.6% 0.5%	95.5% 0.3%	95.0% 0.2%	94.9% 0.0%
2002	95.2% 1.4%	95.2% 1.8%	96.0% 1.6%	96.5% 1.3%	97.0% 0.5%	97.3% 0.5%	97.7% 1.2%	96.5% 0.0%	96.2% 0.6%	95.9% 0.5%	96.6% 1.6%	96.5% 1.6%
2003	95.6% 0.4%	96.4% 1.2%	95.7% -0.3%	96.6% 0.1%	97.2% 0.1%	97.6% 0.4%	97.8% 0.1%	97.4% 0.9%	96.4% 0.2%	97.1% 1.2%	96.4% -0.1%	96.6% 0.1%
2004	94.8% -0.8%	96.2% -0.2%	95.9% 0.2%	97.3% 0.7%	98.3% 1.1%	97.8% 0.2%	98.0% 0.2%	97.4% 0.0%	96.4% 0.0%	96.5% -0.6%	96.4% 0.0%	96.1% -0.4%
2005	96.2% 1.4%	96.1% -0.1%	96.4% 0.6%	97.2% -0.1%	97.0% -1.3%	97.8% 0.0%	97.6% -0.4%	97.4% 0.0%	97.2% 0.8%	97.0% 0.5%	96.3% -0.1%	95.6% -0.5%
2006	95.4% -0.8%	95.4% -0.8%	95.6% -0.8%	96.4% -0.8%	96.4% -0.6%	96.4% -1.4%	96.4% -1.2%	95.9% -1.5%	95.4% -1.8%	95.3% -1.8%	94.6% -1.8%	94.1% -1.6%
2007	93.5% -2.0%	94.0% -1.4%	94.8% -0.9%	95.7% -0.7%	95.9% -0.5%	95.9% -0.5%	95.9% -0.5%	94.7% -1.3%	94.7% -0.8%	94.3% -1.0%	93.2% -1.5%	91.9% -2.3%
2008	92.7% -0.9%	93.0% -1.0%	92.6% -2.3%	93.2% -2.6%	94.3% -1.6%	94.4% -1.6%	94.4% -1.6%	93.9% -0.8%	93.2% -1.5%	92.2% -2.2%	91.2% -2.2%	91.7% -0.3%
2009	88.6% -4.4%	88.9% -4.4%	91.0% -1.7%	91.1% -2.2%	91.3% -3.2%	92.6% -1.9%	92.1% -2.4%	92.3% -1.7%	92.7% -0.6%	92.8% 0.7%	92.9% 1.9%	91.2% -0.6%
2010	90.3% 1.9%	90.5% 1.8%	91.6% 0.7%	93.4% 2.5%	93.4% 2.3%	92.8% 0.2%	90.7% -1.5%					

Market History Report © Copyright 2010 TREND. Compiled on 8/10/2010. Information deemed reliable, but not guaranteed. Contact TREND for reprint permission.

TREND • 660 American Avenue, Suite 203 • King of Prussia, PA 19406 • 1-877-330-9900 • www.trendmls.com