

MARKET HISTORY

Includes data through 11/2009

Delaware County, PA
Single-Family



Market History Report

The Market History Report details current and historical statistical information for single-family listings recorded within TREND. This statistical report is organized by county and contains valuable month-over-month, year-over-year statistical information for each of the last 10 years. The Market History Report details activity in a particular market over a 10-year period – from where it's been to where it's at now. The easy-to-read month-over-month, year-over-year chart and graph enables you to clearly identify the year-over-year changes while accounting for seasonal and market trends.

Utilizing the report allows you to gain a better understanding of your market. This will give you new insights and increase your company's value when working with consumers. This powerful report is provided exclusively to TREND members.

Contents

Total Inventory	3
Inventory Accumulation	4
Pending Units	5
Settled Units	6
Total Settled Volume	7
Median Settled Price.....	8
Average Settled Price	9
Average Settled Price / Original Price.....	10

Definitions

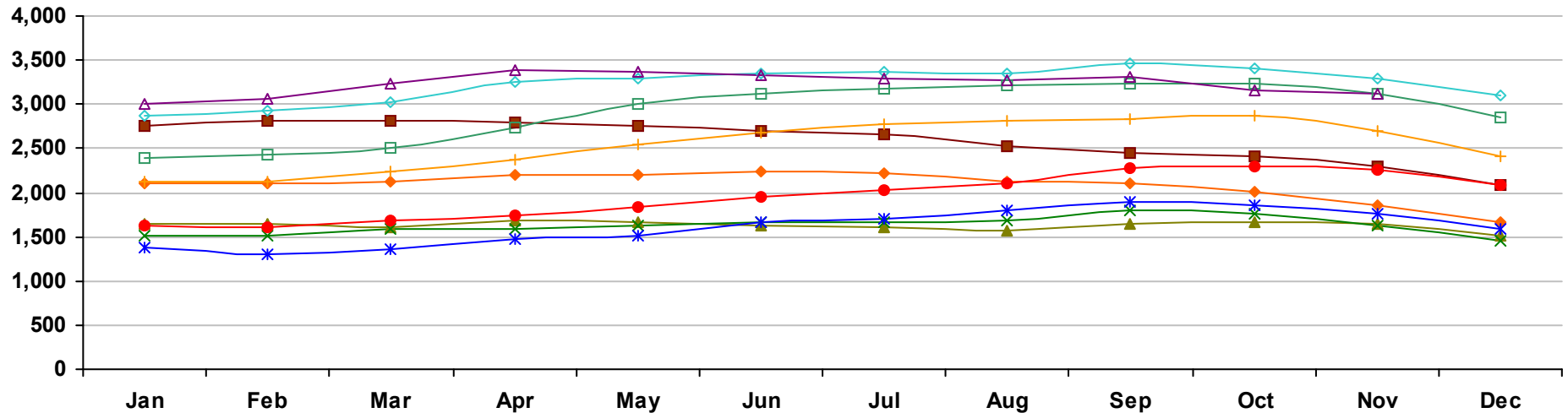
Total Inventory	The number of active single-family listings on the market on the last day of the specified month.
Inventory Accumulation	The number of months it would take to exhaust the current supply of single-family listings at the current absorption rate.
Absorption Rate	The average number of single-family listings sold in the market per month over the previous 12 months.
Pending Units	The number of single-family listings with Pending dates during the specified month.
Settled Units	The number of single-family listings with Settled dates during the specified month.
Total Settled Volume	The total dollar volume of single-family listings that have settled during the specified month.

Median Settled Price	The median price that single-family listings settled for during the specified month. Determined by arranging all Settled Listings in numerical order by price and then selecting the middle value.
Average Settled Price	The average price that single-family listings settled for during the specified month. Determined by dividing the Total Settled Volume by the number of Settled Listings.
Average Settled Price / Original Price	The average percentage of the Original Price that single-family listings settled for during the specified month. This number is determined by dividing the Settled Price by the Original Price for every listing, summing them and then dividing by the number of settled listings. TREND excludes listings if the Settled Price is greater than 150 percent or less than 50 percent of the Original Price. This ensures the percentage is more representative of listings in the market area.
Percent Change	The change in value as compared to the same month of the previous year. Indicated by +/-0.0%.

Notes on Statistics

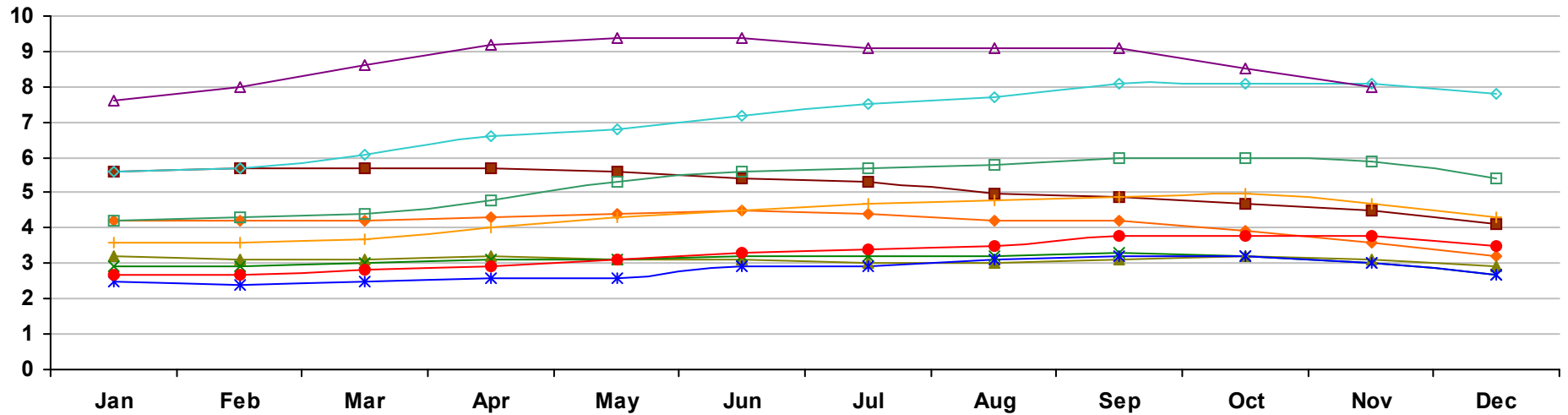
- All statistics are from TREND's monthly Residential Activity Reports. Due to the fluid nature of MLS data, insignificant statistical variations may occur with regard to sales activity between the various TREND reports.
- Mobile homes and condominiums are excluded from these statistics.
- This report includes information on listings and transactions facilitated through TREND and does not reflect the total number of listings and transactions of a given market area.
- All monetary statistics are rounded to the nearest \$10.

Delaware County, PA - Single-Family - Total Inventory



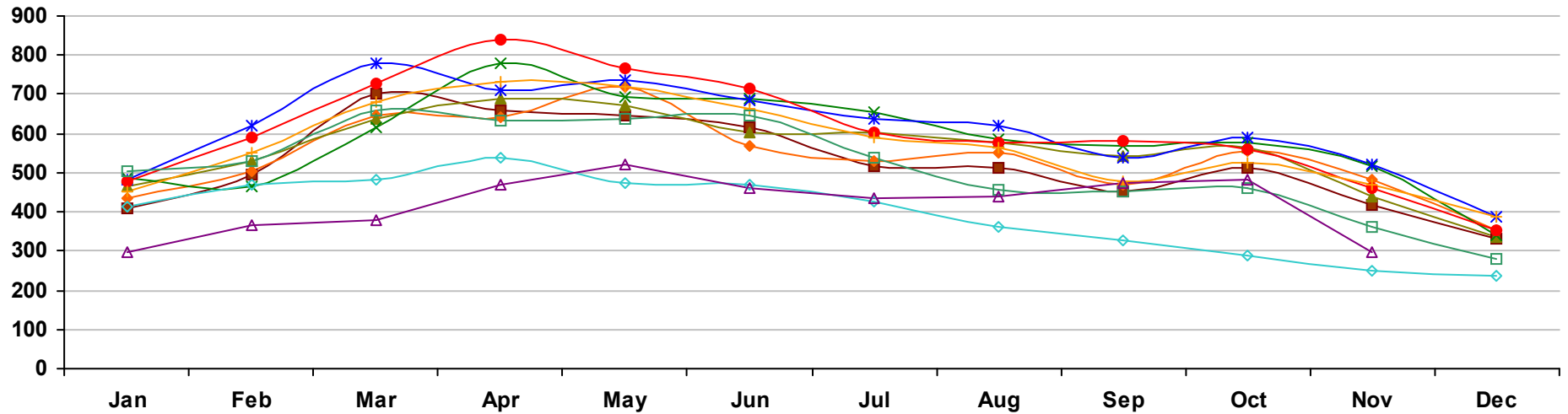
	Jan	Feb	Mar	Apr	May	Jun	Jul	Aug	Sep	Oct	Nov	Dec
2000	2,752	2,811	2,812	2,788	2,765	2,701	2,652	2,526	2,458	2,411	2,304	2,077
2001	2,108 -23.4%	2,103 -25.2%	2,132 -24.2%	2,194 -21.3%	2,208 -20.1%	2,245 -16.9%	2,219 -16.3%	2,129 -15.7%	2,111 -14.1%	2,009 -16.7%	1,864 -19.1%	1,672 -19.5%
2002	1,647 -21.9%	1,647 -21.7%	1,607 -24.6%	1,683 -23.3%	1,657 -25.0%	1,621 -27.8%	1,600 -27.9%	1,574 -26.1%	1,648 -21.9%	1,672 -16.8%	1,637 -12.2%	1,514 -9.4%
2003	1,520 -7.7%	1,511 -8.3%	1,592 -0.9%	1,592 -5.4%	1,632 -1.5%	1,659 2.3%	1,664 4.0%	1,684 7.0%	1,796 9.0%	1,755 5.0%	1,633 -0.2%	1,464 -3.3%
2004	1,381 -9.1%	1,304 -13.7%	1,361 -14.5%	1,475 -7.3%	1,505 -7.8%	1,665 0.4%	1,706 2.5%	1,801 6.9%	1,891 5.3%	1,853 5.6%	1,759 7.7%	1,592 8.7%
2005	1,631 18.1%	1,613 23.7%	1,684 23.7%	1,747 18.4%	1,836 22.0%	1,957 17.5%	2,028 18.9%	2,100 16.6%	2,274 20.3%	2,295 23.9%	2,258 28.4%	2,088 31.2%
2006	2,129 30.5%	2,128 31.9%	2,243 33.2%	2,369 35.6%	2,539 38.3%	2,674 36.6%	2,766 36.4%	2,821 34.3%	2,836 24.7%	2,875 25.3%	2,696 19.4%	2,420 15.9%
2007	2,400 12.7%	2,425 14.0%	2,515 12.1%	2,732 15.3%	2,998 18.1%	3,121 16.7%	3,169 14.6%	3,210 13.8%	3,244 14.4%	3,243 12.8%	3,123 15.8%	2,846 17.6%
2008	2,871 19.6%	2,922 20.5%	3,033 20.6%	3,248 18.9%	3,292 9.8%	3,340 7.0%	3,360 6.0%	3,342 4.1%	3,458 6.6%	3,404 5.0%	3,284 5.2%	3,102 9.0%
2009	3,001 4.5%	3,063 4.8%	3,227 6.4%	3,395 4.5%	3,373 2.5%	3,338 -0.1%	3,289 -2.1%	3,269 -2.2%	3,304 -4.5%	3,166 -7.0%	3,122 -4.9%	

Delaware County, PA - Single-Family - Inventory Accumulation



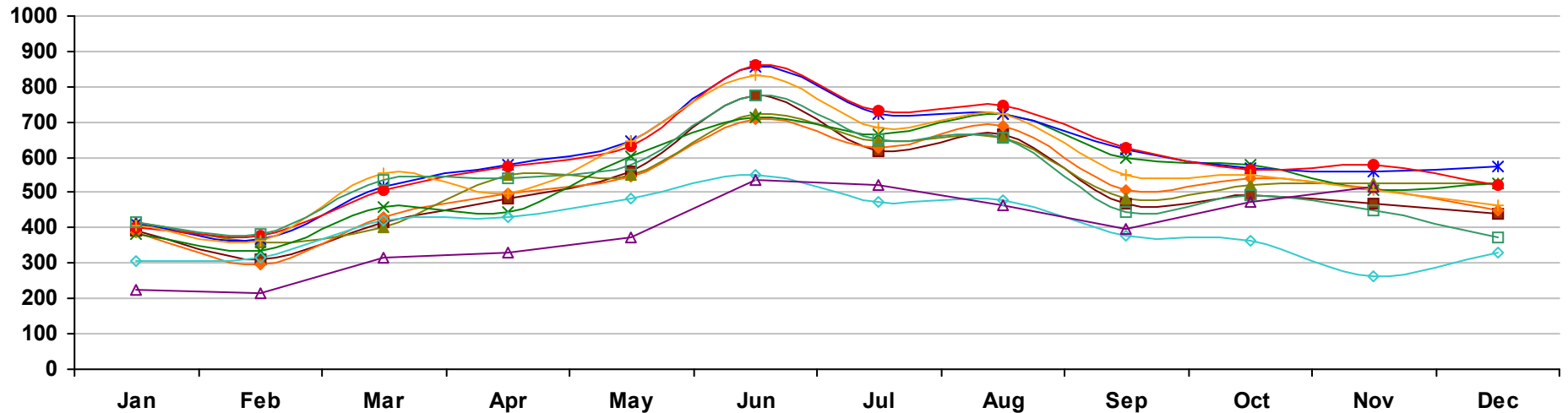
	Jan	Feb	Mar	Apr	May	Jun	Jul	Aug	Sep	Oct	Nov	Dec
2000	5.6	5.7	5.7	5.7	5.6	5.4	5.3	5.0	4.9	4.7	4.5	4.1
2001	4.2 -25.0%	4.2 -26.3%	4.2 -26.3%	4.3 -24.6%	4.4 -21.4%	4.5 -16.7%	4.4 -17.0%	4.2 -16.0%	4.2 -14.3%	3.9 -17.0%	3.6 -20.0%	3.2 -22.0%
2002	3.2 -23.8%	3.1 -26.2%	3.1 -26.2%	3.2 -25.6%	3.1 -29.5%	3.1 -31.1%	3.0 -31.8%	3.0 -28.6%	3.1 -26.2%	3.2 -17.9%	3.1 -13.9%	2.9 -9.4%
2003	2.9 -9.4%	2.9 -6.5%	3.0 -3.2%	3.1 -3.1%	3.1 0.0%	3.2 3.2%	3.2 6.7%	3.2 6.7%	3.3 6.5%	3.2 0.0%	3.0 -3.2%	2.7 -6.9%
2004	2.5 -13.8%	2.4 -17.2%	2.5 -16.7%	2.6 -16.1%	2.6 -16.1%	2.9 -9.4%	2.9 -9.4%	3.1 -3.1%	3.2 -3.0%	3.2 0.0%	3.0 0.0%	2.7 0.0%
2005	2.7 8.0%	2.7 12.5%	2.8 12.0%	2.9 11.5%	3.1 19.2%	3.3 13.8%	3.4 17.2%	3.5 12.9%	3.8 18.7%	3.8 18.7%	3.8 26.7%	3.5 29.6%
2006	3.6 33.3%	3.6 33.3%	3.7 32.1%	4.0 37.9%	4.3 38.7%	4.5 36.4%	4.7 38.2%	4.8 37.1%	4.9 28.9%	5.0 31.6%	4.7 23.7%	4.3 22.9%
2007	4.2 16.7%	4.3 19.4%	4.4 18.9%	4.8 20.0%	5.3 23.3%	5.6 24.4%	5.7 21.3%	5.8 20.8%	6.0 22.4%	6.0 20.0%	5.9 25.5%	5.4 25.6%
2008	5.6 33.3%	5.7 32.6%	6.1 38.6%	6.6 37.5%	6.8 28.3%	7.2 28.6%	7.5 31.6%	7.7 32.8%	8.1 35.0%	8.1 35.0%	8.1 37.3%	7.8 44.4%
2009	7.6 35.7%	8.0 40.4%	8.6 41.0%	9.2 39.4%	9.4 38.2%	9.4 30.6%	9.1 21.3%	9.1 18.2%	9.1 12.3%	8.5 4.9%	8.0 -1.2%	

Delaware County, PA - Single-Family - Pending Units



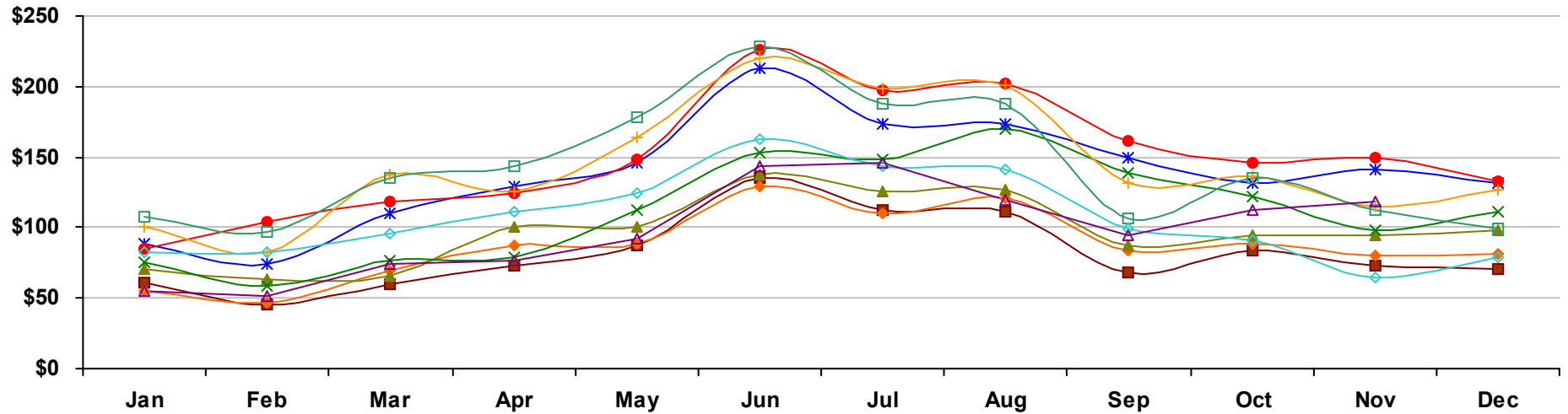
	Jan	Feb	Mar	Apr	May	Jun	Jul	Aug	Sep	Oct	Nov	Dec
2000	407	494	702	659	644	617	518	514	454	512	417	332
2001	437 7.4%	503 1.8%	646 -8.0%	641 -2.7%	721 12.0%	567 -8.1%	530 2.3%	553 7.6%	470 3.5%	557 8.8%	483 15.8%	353 6.3%
2002	466 6.6%	528 5.0%	639 -1.1%	687 7.2%	672 -6.8%	603 6.3%	605 14.2%	578 4.5%	542 15.3%	566 1.6%	440 -8.9%	335 -5.1%
2003	485 4.1%	465 -11.9%	617 -3.4%	778 13.2%	694 3.3%	688 14.1%	653 7.9%	587 1.6%	568 4.8%	577 1.9%	517 17.5%	340 1.5%
2004	484 -0.2%	621 33.5%	780 26.4%	711 -8.6%	736 6.1%	683 -0.7%	639 -2.1%	620 5.6%	538 -5.3%	590 2.3%	519 0.4%	388 14.1%
2005	479 -1.0%	591 -4.8%	726 -6.9%	841 18.3%	765 3.9%	715 4.7%	602 -5.8%	579 -6.6%	582 8.2%	558 -5.4%	460 -11.4%	351 -9.5%
2006	453 -5.4%	553 -6.4%	680 -6.3%	733 -12.8%	721 -5.8%	665 -7.0%	591 -1.8%	564 -2.6%	476 -18.2%	524 -6.1%	468 1.7%	386 10.0%
2007	503 11.0%	529 -4.3%	659 -3.1%	632 -13.8%	639 -11.4%	646 -2.9%	539 -8.8%	455 -19.3%	452 -5.0%	462 -11.8%	362 -22.6%	280 -27.5%
2008	413 -17.9%	468 -11.5%	481 -27.0%	537 -15.0%	473 -26.0%	469 -27.4%	425 -21.2%	361 -20.7%	326 -27.9%	287 -37.9%	248 -31.5%	238 -15.0%
2009	297 -28.1%	368 -21.4%	381 -20.8%	469 -12.7%	523 10.6%	459 -2.1%	436 2.6%	440 21.9%	473 45.1%	483 68.3%	295 19.0%	

Delaware County, PA - Single-Family - Settled Units



	Jan	Feb	Mar	Apr	May	Jun	Jul	Aug	Sep	Oct	Nov	Dec
2000	392	313	414	483	558	777	618	666	467	493	471	441
2001	387	299	429	496	546	708	629	688	509	540	514	451
	-1.3%	-4.5%	3.6%	2.7%	-2.2%	-8.9%	1.8%	3.3%	9.0%	9.5%	9.1%	2.3%
2002	418	357	402	549	548	722	647	654	482	521	528	528
	8.0%	19.4%	-6.3%	10.7%	0.4%	2.0%	2.9%	-4.9%	-5.3%	-3.5%	2.7%	17.1%
2003	384	333	458	443	603	712	663	722	596	579	508	527
	-8.1%	-6.7%	13.9%	-19.3%	10.0%	-1.4%	2.5%	10.4%	23.7%	11.1%	-3.8%	-0.2%
2004	410	367	516	580	645	857	724	721	624	571	559	575
	6.8%	10.2%	12.7%	30.9%	7.0%	20.4%	9.2%	-0.1%	4.7%	-1.4%	10.0%	9.1%
2005	403	377	507	576	633	862	734	748	625	564	577	523
	-1.7%	2.7%	-1.7%	-0.7%	-1.9%	0.6%	1.4%	3.7%	0.2%	-1.2%	3.2%	-9.0%
2006	405	363	556	499	648	831	682	722	548	551	509	465
	0.5%	-3.7%	9.7%	-13.4%	2.4%	-3.6%	-7.1%	-3.5%	-12.3%	-2.3%	-11.8%	-11.1%
2007	415	381	535	541	580	773	649	655	443	491	448	374
	2.5%	5.0%	-3.8%	8.4%	-10.5%	-7.0%	-4.8%	-9.3%	-19.2%	-10.9%	-12.0%	-19.6%
2008	306	318	420	431	485	550	472	477	378	362	262	329
	-26.3%	-16.5%	-21.5%	-20.3%	-16.4%	-28.8%	-27.3%	-27.2%	-14.7%	-26.3%	-41.5%	-12.0%
2009	224	217	315	330	372	537	521	464	396	474	517	
	-26.8%	-31.8%	-25.0%	-23.4%	-23.3%	-2.4%	10.4%	-2.7%	4.8%	30.9%	97.3%	

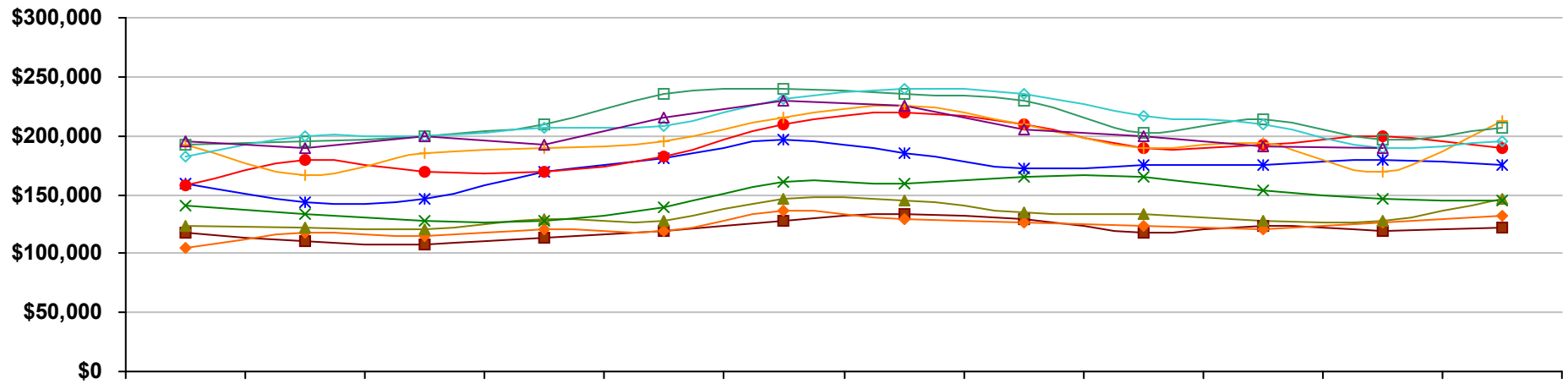
Delaware County, PA - Single-Family - Total Settled Volume



	Jan	Feb	Mar	Apr	May	Jun	Jul	Aug	Sep	Oct	Nov	Dec
2000	\$61	\$45	\$60	\$73	\$87	\$135	\$112	\$111	\$68	\$84	\$73	\$70
2001	\$55 -10.0%	\$47 4.8%	\$69 16.1%	\$87 19.5%	\$89 2.2%	\$129 -4.0%	\$110 -1.4%	\$121 9.5%	\$84 24.0%	\$88 4.7%	\$80 9.4%	\$81 15.2%
2002	\$71 29.0%	\$63 34.2%	\$66 -4.4%	\$101 17.1%	\$101 14.2%	\$138 6.6%	\$126 14.3%	\$127 4.8%	\$87 3.1%	\$95 7.0%	\$94 18.1%	\$98 20.7%
2003	\$75 6.7%	\$59 -6.5%	\$76 14.7%	\$79 -21.7%	\$112 10.9%	\$153 10.8%	\$148 17.7%	\$170 33.7%	\$139 59.9%	\$122 28.8%	\$98 3.6%	\$111 13.4%
2004	\$89 18.6%	\$74 25.4%	\$110 45.2%	\$129 62.7%	\$146 30.5%	\$213 39.6%	\$173 16.6%	\$173 1.5%	\$149 6.9%	\$132 8.3%	\$141 44.2%	\$132 18.7%
2005	\$85 -4.5%	\$104 40.4%	\$118 6.8%	\$125 -3.5%	\$148 1.2%	\$226 6.2%	\$197 14.1%	\$202 17.2%	\$162 9.1%	\$146 10.2%	\$149 6.0%	\$133 0.8%
2006	\$101 18.4%	\$82 -21.4%	\$137 16.6%	\$126 1.0%	\$164 11.1%	\$220 -2.7%	\$198 0.7%	\$201 -0.7%	\$132 -18.6%	\$136 -6.5%	\$115 -22.9%	\$127 -4.1%
2007	\$108 7.5%	\$97 18.2%	\$135 -1.8%	\$143 13.3%	\$178 8.4%	\$229 3.9%	\$188 -5.2%	\$188 -6.3%	\$107 -18.7%	\$135 -0.9%	\$112 -2.8%	\$99 -22.1%
2008	\$83 -22.9%	\$83 -14.4%	\$96 -28.4%	\$111 -22.3%	\$124 -30.3%	\$163 -28.8%	\$143 -23.8%	\$141 -25.1%	\$99 -7.5%	\$91 -32.7%	\$65 -41.6%	\$79 -20.7%
2009	\$55 -34.0%	\$52 -37.1%	\$74 -23.1%	\$76 -31.6%	\$92 -26.1%	\$144 -11.8%	\$146 2.1%	\$120 -14.7%	\$94 -5.7%	\$113 24.3%	\$119 82.7%	

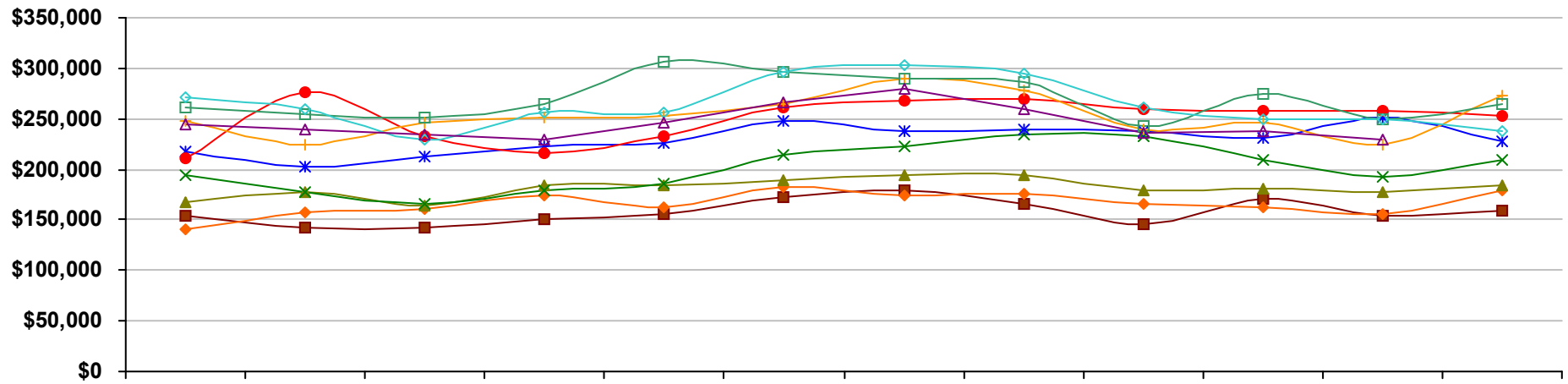
Values on this report are displayed in Millions

Delaware County, PA - Single-Family - Median Settled Price



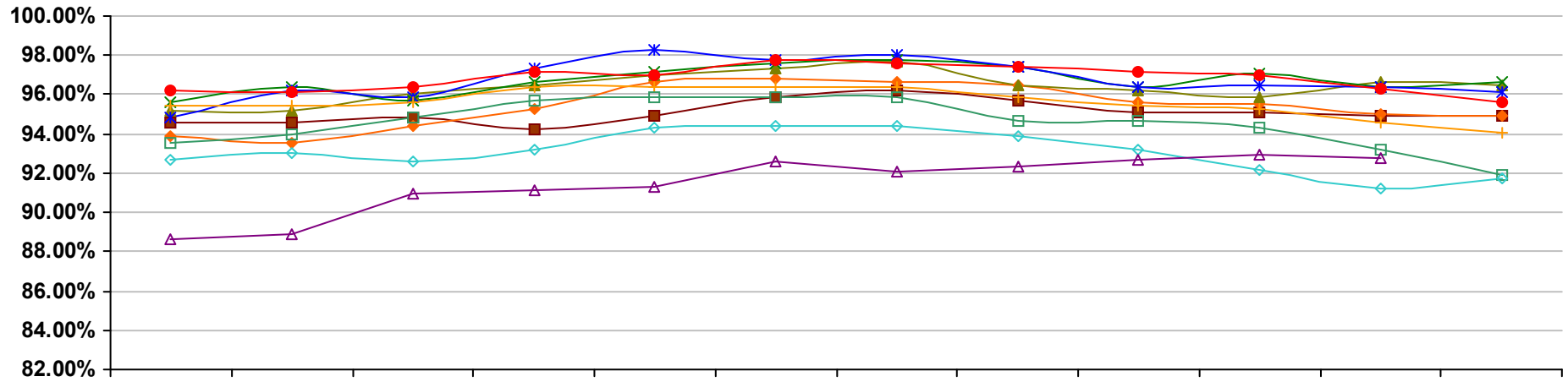
	Jan	Feb	Mar	Apr	May	Jun	Jul	Aug	Sep	Oct	Nov	Dec
2000	\$117,000	\$111,000	\$108,000	\$113,000	\$119,000	\$128,000	\$133,000	\$129,000	\$118,000	\$124,000	\$119,000	\$122,000
2001	\$105,000 -10.3%	\$117,000 5.4%	\$115,000 6.5%	\$120,000 6.2%	\$119,000 0.0%	\$136,000 6.2%	\$129,000 -3.0%	\$127,000 -1.6%	\$124,000 5.1%	\$120,000 -3.2%	\$127,000 6.7%	\$132,000 8.2%
2002	\$124,000 18.1%	\$122,000 4.3%	\$121,000 5.2%	\$129,000 7.5%	\$128,000 7.6%	\$146,000 7.4%	\$145,000 12.4%	\$135,000 6.3%	\$134,000 8.1%	\$128,000 6.7%	\$128,000 0.8%	\$147,000 11.4%
2003	\$141,000 13.7%	\$133,000 9.0%	\$128,000 5.8%	\$128,000 -0.8%	\$139,000 8.6%	\$161,000 10.3%	\$160,000 10.3%	\$165,000 22.2%	\$165,000 23.1%	\$153,000 19.5%	\$146,000 14.1%	\$145,000 -1.4%
2004	\$160,000 13.5%	\$144,000 8.3%	\$146,000 14.1%	\$170,000 32.8%	\$181,000 30.2%	\$196,000 21.7%	\$185,000 15.6%	\$172,000 4.2%	\$175,000 6.1%	\$175,000 14.4%	\$179,000 22.6%	\$175,000 20.7%
2005	\$158,000 -1.2%	\$179,000 24.3%	\$170,000 16.4%	\$170,000 0.0%	\$182,000 0.6%	\$210,000 7.1%	\$220,000 18.9%	\$209,000 21.5%	\$190,000 8.6%	\$192,000 9.7%	\$199,000 11.2%	\$189,000 8.0%
2006	\$192,000 21.5%	\$167,000 -6.7%	\$185,000 8.8%	\$189,000 11.2%	\$195,000 7.1%	\$215,000 2.4%	\$225,000 2.3%	\$210,000 0.5%	\$190,000 0.0%	\$194,000 1.0%	\$170,000 -14.6%	\$212,000 12.2%
2007	\$193,000 0.5%	\$195,000 16.8%	\$199,000 7.6%	\$210,000 11.1%	\$235,000 20.5%	\$239,000 11.2%	\$235,000 4.4%	\$230,000 9.5%	\$203,000 6.8%	\$214,000 10.3%	\$197,000 15.9%	\$207,000 -2.4%
2008	\$183,000 -5.2%	\$199,000 2.1%	\$200,000 0.5%	\$206,000 -1.9%	\$208,000 -11.5%	\$231,000 -3.3%	\$240,000 2.1%	\$235,000 2.2%	\$217,000 6.9%	\$209,000 -2.3%	\$190,000 -3.6%	\$195,000 -5.8%
2009	\$195,000 6.6%	\$189,000 -5.0%	\$200,000 0.0%	\$192,000 -6.8%	\$215,000 3.4%	\$230,000 -0.4%	\$225,000 -6.2%	\$205,000 -12.8%	\$200,000 -7.8%	\$191,000 -8.6%	\$190,000 0.0%	

Delaware County, PA - Single-Family - Average Settled Price



	Jan	Feb	Mar	Apr	May	Jun	Jul	Aug	Sep	Oct	Nov	Dec
2000	\$154,000	\$143,000	\$143,000	\$150,000	\$155,000	\$173,000	\$180,000	\$166,000	\$145,000	\$171,000	\$154,000	\$159,000
2001	\$141,000 -8.4%	\$157,000 9.8%	\$161,000 12.6%	\$174,000 16.0%	\$162,000 4.5%	\$182,000 5.2%	\$174,000 -3.3%	\$176,000 6.0%	\$165,000 13.8%	\$163,000 -4.7%	\$155,000 0.6%	\$179,000 12.6%
2002	\$168,000 19.1%	\$177,000 12.7%	\$164,000 1.9%	\$184,000 5.7%	\$184,000 13.6%	\$190,000 4.4%	\$194,000 11.5%	\$194,000 10.2%	\$180,000 9.1%	\$181,000 11.0%	\$178,000 14.8%	\$185,000 3.4%
2003	\$195,000 16.1%	\$177,000 0.0%	\$165,000 0.6%	\$179,000 -2.7%	\$186,000 1.1%	\$214,000 12.6%	\$223,000 14.9%	\$235,000 21.1%	\$233,000 29.4%	\$210,000 16.0%	\$192,000 7.9%	\$210,000 13.5%
2004	\$217,000 11.3%	\$202,000 14.1%	\$213,000 29.1%	\$222,000 24.0%	\$226,000 21.5%	\$248,000 15.9%	\$238,000 6.7%	\$239,000 1.7%	\$238,000 2.1%	\$231,000 10.0%	\$251,000 30.7%	\$228,000 8.6%
2005	\$211,000 -2.8%	\$276,000 36.6%	\$232,000 8.9%	\$216,000 -2.7%	\$233,000 3.1%	\$262,000 5.6%	\$268,000 12.6%	\$270,000 13.0%	\$259,000 8.8%	\$258,000 11.7%	\$258,000 2.8%	\$253,000 11.0%
2006	\$248,000 17.5%	\$225,000 -18.5%	\$246,000 6.0%	\$252,000 16.7%	\$253,000 8.6%	\$265,000 1.1%	\$290,000 8.2%	\$278,000 3.0%	\$240,000 -7.3%	\$246,000 -4.7%	\$225,000 -12.8%	\$273,000 7.9%
2007	\$261,000 5.2%	\$254,000 12.9%	\$251,000 2.0%	\$264,000 4.8%	\$307,000 21.3%	\$296,000 11.7%	\$289,000 -0.3%	\$287,000 3.2%	\$242,000 0.8%	\$274,000 11.4%	\$249,000 10.7%	\$265,000 -2.9%
2008	\$272,000 4.2%	\$260,000 2.4%	\$229,000 -8.8%	\$257,000 -2.7%	\$256,000 -16.6%	\$296,000 0.0%	\$303,000 4.8%	\$295,000 2.8%	\$262,000 8.3%	\$250,000 -8.8%	\$249,000 0.0%	\$238,000 -10.2%
2009	\$245,000 -9.9%	\$240,000 -7.7%	\$235,000 2.6%	\$230,000 -10.5%	\$246,000 -3.9%	\$267,000 -9.8%	\$280,000 -7.6%	\$259,000 -12.2%	\$236,000 -9.9%	\$237,000 -5.2%	\$230,000 -7.6%	

Delaware County, PA - Single-Family - Average Settled Price/Original Price



	Jan	Feb	Mar	Apr	May	Jun	Jul	Aug	Sep	Oct	Nov	Dec
2000	94.6%	94.6%	94.8%	94.2%	94.9%	95.9%	96.2%	95.7%	95.1%	95.1%	94.9%	94.9%
2001	93.9% -0.7%	93.5% -1.2%	94.4% -0.4%	95.3% 1.2%	96.6% 1.8%	96.8% 1.0%	96.6% 0.4%	96.5% 0.8%	95.6% 0.5%	95.5% 0.3%	95.0% 0.2%	94.9% 0.0%
2002	95.2% 1.4%	95.2% 1.8%	96.0% 1.6%	96.5% 1.3%	97.0% 0.5%	97.3% 0.5%	97.7% 1.2%	96.5% 0.0%	96.2% 0.6%	95.9% 0.5%	96.6% 1.6%	96.5% 1.6%
2003	95.6% 0.4%	96.4% 1.2%	95.7% -0.3%	96.6% 0.1%	97.2% 0.1%	97.6% 0.4%	97.8% 0.1%	97.4% 0.9%	96.4% 0.2%	97.1% 1.2%	96.4% -0.1%	96.6% 0.1%
2004	94.8% -0.8%	96.2% -0.2%	95.9% 0.2%	97.3% 0.7%	98.3% 1.1%	97.8% 0.2%	98.0% 0.2%	97.4% 0.0%	96.4% 0.0%	96.5% -0.6%	96.4% 0.0%	96.1% -0.4%
2005	96.2% 1.4%	96.1% -0.1%	96.4% 0.6%	97.2% -0.1%	97.0% -1.3%	97.8% 0.0%	97.6% -0.4%	97.4% 0.0%	97.2% 0.8%	97.0% 0.5%	96.3% -0.1%	95.6% -0.5%
2006	95.4% -0.8%	95.4% -0.8%	95.6% -0.8%	96.4% -0.8%	96.4% -0.6%	96.4% -1.4%	96.4% -1.2%	95.9% -1.5%	95.4% -1.8%	95.3% -1.8%	94.6% -1.8%	94.1% -1.6%
2007	93.5% -2.0%	94.0% -1.4%	94.8% -0.9%	95.7% -0.7%	95.9% -0.5%	95.9% -0.5%	95.9% -0.5%	94.7% -1.3%	94.7% -0.8%	94.3% -1.0%	93.2% -1.5%	91.9% -2.3%
2008	92.7% -0.9%	93.0% -1.0%	92.6% -2.3%	93.2% -2.6%	94.3% -1.6%	94.4% -1.6%	94.4% -1.6%	93.9% -0.8%	93.2% -1.5%	92.2% -2.2%	91.2% -2.2%	91.7% -0.3%
2009	88.6% -4.4%	88.9% -4.4%	91.0% -1.7%	91.1% -2.2%	91.3% -3.2%	92.6% -1.9%	92.1% -2.4%	92.3% -1.7%	92.7% -0.6%	92.9% 0.8%	92.8% 1.8%	